

# Victoria Milk Production

## 19/20 by Region

### (Million Litres)



		Eastern			Northern			Western			Victoria		
		18/19	19/20	Var %	18/19	19/20	Var %	18/19	19/20	Var %	18/19	19/20	Var %
July		114.5	114.3	-0.2%	131.3	118.8	-9.5%	184.7	169.4	-8.3%	430.5	402.5	-6.5%
	YTD	114.5	114.3	-0.2%	131.3	118.8	-9.5%	184.7	169.4	-8.3%	430.5	402.5	-6.5%
August		153.0	151.4	-1.0%	144.7	133.0	-8.1%	197.1	183.2	-7.1%	494.7	467.5	-5.5%
	YTD	267.5	265.7	-0.6%	276.0	251.8	-8.8%	381.8	352.6	-7.7%	925.2	870.1	-6.0%
September		204.3	208.7	2.1%	176.0	161.9	-8.0%	219.9	204.8	-6.9%	600.2	575.4	-4.1%
	YTD	471.7	474.4	0.6%	452.0	413.7	-8.5%	601.7	557.3	-7.4%	1,525.4	1,445.5	-5.2%
October		235.1	240.5	2.3%	195.5	177.7	-9.1%	239.2	214.7	-10.2%	669.9	632.9	-5.5%
	YTD	706.9	714.9	1.1%	647.5	591.4	-8.7%	840.9	772.1	-8.2%	2,195.3	2,078.4	-5.3%
November		216.0			173.7			212.3			602.0		
	YTD	922.9			821.3			1,053.2			2,797.3		
December		201.0			157.8			190.9			549.6		
	YTD	1,123.8			979.0			1,244.1			3,347.0		
January		162.6			134.9			151.4			448.9		
	YTD	1,286.4			1,113.9			1,395.5			3,795.8		
February		121.3			107.1			111.2			339.6		
	YTD	1,407.7			1,221.1			1,506.7			4,135.4		
March		125.6			108.3			111.2			345.1		
	YTD	1,533.3			1,329.3			1,617.8			4,480.5		
April		117.4			114.1			105.6			337.1		
	YTD	1,650.7			1,443.4			1,723.4			4,817.5		
May		115.7			126.4			129.2			371.2		
	YTD	1,766.4			1,569.8			1,852.6			5,188.7		
June		105.8			120.2			159.3			385.3		
	YTD	1,872.2			1,690.0			2,011.9			5,574.0		
<b>Total</b>		<b>1,872.2</b>			<b>1,690.0</b>			<b>2,011.9</b>			<b>5,574.0</b>		

Produced by Trade and Strategy, Dairy Australia Limited, Source: Dairy Manufacturers

Please Note: These reports contain data based on a combination of voluntary direct reporting from processors, and data sourced from government agencies. Retrospective adjustments are possible if new or revised data is received.

# Milk production report (Litres '000s)

## Victoria

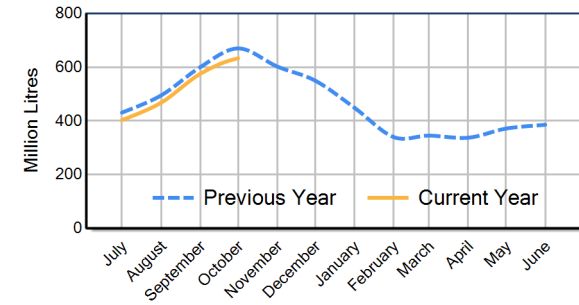


		Eastern	Northern	Western	VIC
Month	October-18	235,147	195,533	239,202	669,882
	October-19	240,478	177,694	214,737	632,908
	<b>% change</b>	<b>2.3%</b>	<b>-9.1%</b>	<b>-10.2%</b>	<b>-5.5%</b>
Region Share	October-18	35.1%	29.2%	35.7%	100.0%
	October-19	38.0%	28.1%	33.9%	100.0%
Year To Date		Eastern	Northern	Western	VIC
	2018/2019	706,887	647,540	840,890	2,195,316
	2019/2020	714,884	591,392	772,085	2,078,361
	<b>% change</b>	<b>1.1%</b>	<b>-8.7%</b>	<b>-8.2%</b>	<b>-5.3%</b>
Region Share	2018/2019	32.2%	29.5%	38.3%	100.0%
	2019/2020	34.4%	28.5%	37.1%	100.0%
Total		Eastern	Northern	Western	VIC
	2018/2019	1,872,156	1,689,966	2,011,875	5,573,997
	<b>Region Share</b>	<b>33.6%</b>	<b>30.3%</b>	<b>36.1%</b>	<b>100.0%</b>

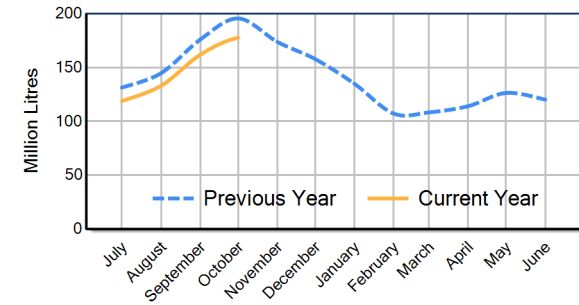
## Average Milkfat & Protein (%)

		Eastern	Northern	Western	VIC
Milkfat	October-17	3.93%	3.89%	3.87%	3.90%
	October-18	3.91%	3.90%	3.87%	3.89%
	October-19	3.83%	3.91%	3.68%	3.80%
	<b>% change 19/20</b>	<b>-1.9%</b>	<b>0.2%</b>	<b>-5.0%</b>	<b>-2.3%</b>
Protein		Eastern	Northern	Western	VIC
	October-17	3.38%	3.37%	3.44%	3.40%
	October-18	3.38%	3.36%	3.46%	3.40%
	October-19	3.38%	3.34%	3.32%	3.35%
<b>% change 19/20</b>	<b>-0.1%</b>	<b>-0.7%</b>	<b>-3.9%</b>	<b>-1.6%</b>	

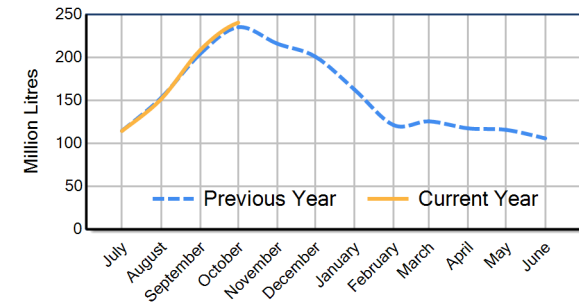
VIC Milk Production - Total Regions



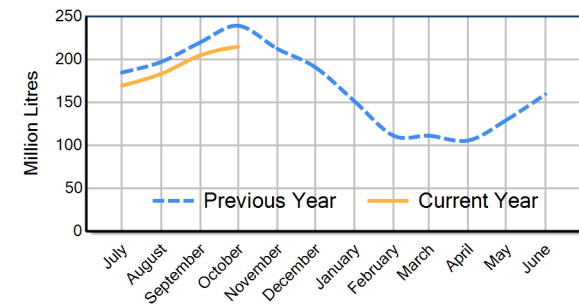
VIC Milk Production - Northern Region



VIC Milk Production - Eastern Region



VIC Milk Production - Western Region



Please note: These reports contain data based on a combination of voluntary direct reporting from processors, and data sourced from government agencies. Retrospective adjustments are possible if new or revised data is received.